




## MANSFIELD 256 - 4

**\$732,724**

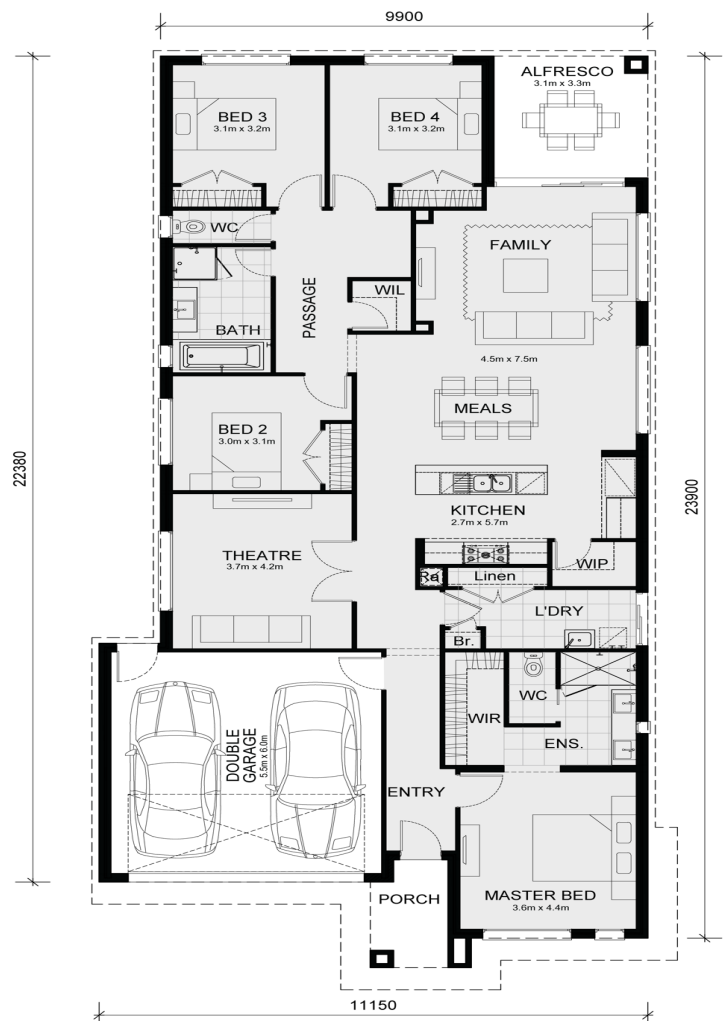
**Lot 2915 Ashbury Estate Mansfield 4  
Bedroom**

**4**  **2**  **2** 

### Titled!

- Developer and council requirements
- 3.52kw photovoltaic solar system (battery ready) installed
- 7 star energy with solar hot water!
- Double Glazed Windows Throughout
- Inclusive of site costs & connections with H1 class slab as per standard inclusions!
- Range of facades including feature render!
- Quality floor coverings throughout entire home!
- 900mm S/S upright oven and cook top with S/S canopy rangehood!
- Stainless steel Dishwasher and Microwave with trim kit!
- Overhead cupboards & wine rack! (Design specific)
- Remote control panel sectional lift garage door!
- Flexible floor plans & so much more!

Call Beau 0435 123 663



#### Area Details

Land Size 400

Building Size

239

**Contact: Beau Huppert**

beau@mimosahomes.com.au

0435 123 663

www.mimosahomes.com.au

**Disclaimer:** Land availability and pricing is subject to the development availability. Mimosa Homes reserves the right to amend specifications and price without notice. All plans and facades are indicative concepts only, and are not intended to be accurate depictions of the building, fencing, paths, driveways or landscaping and are not necessarily to scale all dimensions are

approximate (refer to working drawings). Package prices are based on standard facades and standard inclusions.