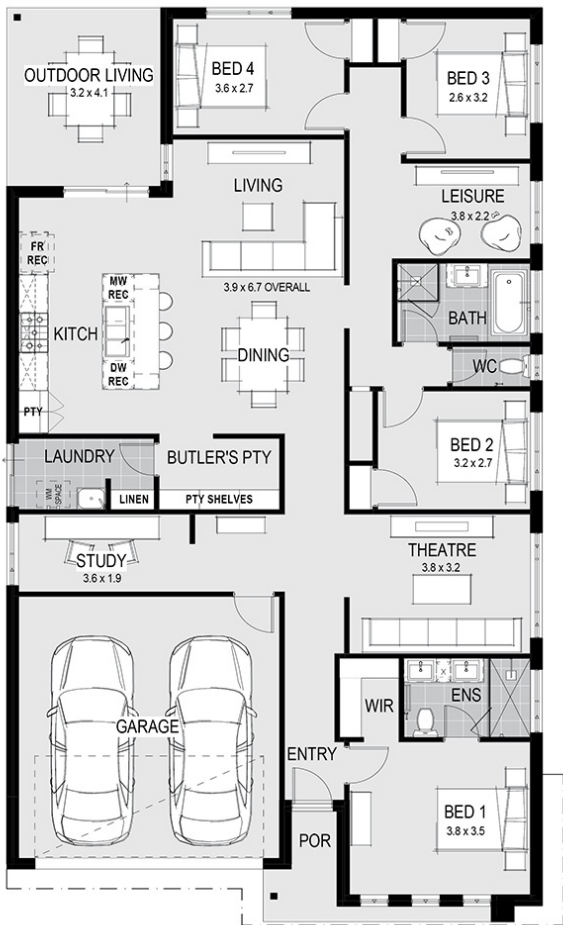




### House Plan:



### LOT #2901

Ashbury Estate

Address: Allansford Crescent, Armstrong Creek, 3217



443 m<sup>2</sup>

### Paris 25 - Melbourne - Classic Special

Package Price From

4 2 2 25 sq

**\$810,000\***

### About package:

• All our house designs are fully customisable or bring your own design - Home Group will build it!

This packages includes our \$50,000 LUXURY KITCHEN:

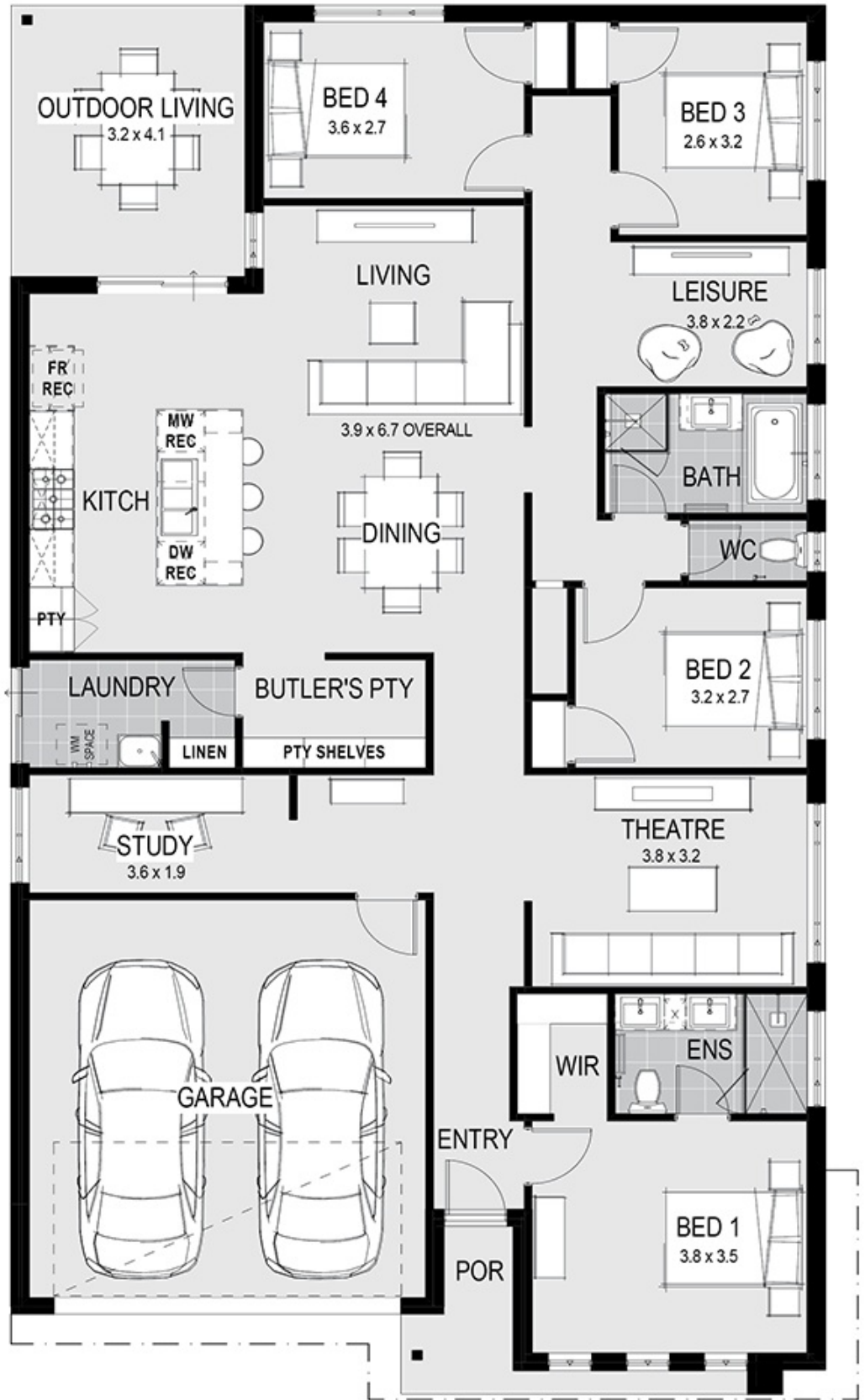
- Electrolux Double Wall Ovens
  - Electrolux 900mm 5 Burner Glass Gas Cooktop
  - Electrolux Integrated Rangehood
  - 1200mm Deep Island Bench with Waterfall Ends
  - Multiple Stone Benchtops & European High Gloss Cabinetry
  - Double Laminate Pantry & Lift Up Overhead Cupboards
  - Combination of Cutlery, Plate and Pot Drawers & Microwave Recess with Pot Drawer Below
  - Undermount Sink & Aluminium Integrated Finger Grip
- Plus these Promotions Inclusions:
- Electronic smart lock upgrade
  - 7 Star Energy Rating
  - Solar System
  - Double Glazing
  - Timber Laminate Flooring & Loop Pile Carpet
  - 2590mm high ceilings
  - Upgraded Façade\*
  - Double Vanity with stone top benches to ensuite\*
  - Double titled Shower to ensuite\*
  - Luxe Rainhead Dual Combo showerhead to Ensuite
  - Developer and Council Requirements
  - and so much more!!

### ENQUIRE NOW:

Jarrad Hodge • P: 0418 394 708 • E: [jarrad.hodge@homegroup.com.au](mailto:jarrad.hodge@homegroup.com.au)

### House Features:

- ✓ Site Costs
- ✓ NBN connection, Council Charges
- ✓ Driveway
- ✓ 18 Month price hold
- ✓ Titled Block!
- ✓ 7-Star Energy Efficiency and NCC Requirements Included
- ✓ Free Luxury Kitchen worth over \$50,000 for a limited time only
- ✓ For a limited time only the Electronic Smart Lock Upgrade is included for Free!



### ENQUIRE NOW:

Jarrad Hodge • P: 0418 394 708 • E: [jarrad.hodge@homegroup.com.au](mailto:jarrad.hodge@homegroup.com.au)