



SUITS 12.5M+ BLOCK

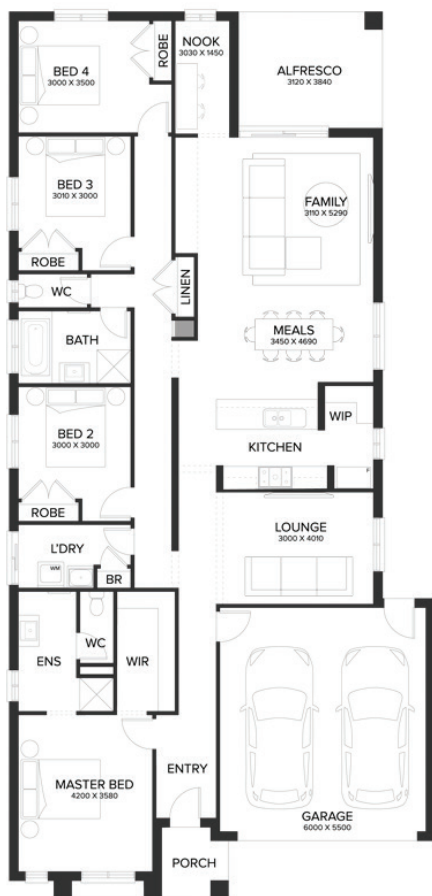
HOUSE & LAND PACKAGE

\$723,277*

first home owners \$713,277[^]

Lot 2914 Ashbury, ARMSTRONG CREEK

4 2 2 2



OAKWOOD 26MF



LOT SIZE 400 sqm

HOUSE AREA 237.16 sqm

Inclusions

- Fixed Site Costs Including Rock Removal
- Council & Developer Requirements
- Floor Coverings Throughout
- Exposed Aggregate Driveway
- 2590mm Ceilings To Single Storey & Ground Floor In Double Storey Homes
- 40mm Stone Benchtops To Kitchen & 20mm To Bathroom & Ensuite
- 900mm Appliances, Dishwasher & Microwave With Trim Kit
- LED Lights Throughout
- Blinds Throughout
- Evaporative Cooling
- 2 Pot Drawers To Kitchen With Soft Closers
- NBN Network

**For more information contact
Shubham Singla on 0433 677 845**

*Fixed Price Current As Of 07/08/2023. Fixed Pricing Is Based On Developer Engineering Plans, Estate Guidelines And Plan Of Subdivision. Land Availability And Pricing Supplied By The Developer Are Subject To Change Without Notice. All House And Land Packages Are Subject To Developer Approval. Price Does Not Include Any Stamp Duty, Government, Legal Or Bank Charges. *Total Package Price Minus \$10K FHOG (Subject To SRO Eligibility) The First Home Owners Grant Is A Government Incentive And Any Claims Will Be Lodged Externally. Photographs In This Flyer May Depict Fixtures, Finishes And Features Either Not Supplied Or Are Upgrade Options By Sherridon. All Floorplan, Facade Images And Photographs Have Been Used For Illustrative Purposes Only (Refer To Contract Documentation For Full Details) And May Not Represent The Final Product As Shown. Please Refer To Your Friendly New Home Consultant For An Exact List Of Inclusions With Detail. Sherridon Homes Reserves The Right To Amend Specification And Price Without Notice. VIC Builder's Licence: CDB-U 50039v