



## House Plan:



## LOT #3026

Ashbury Estate

Address: Allansford Crescent, Armstrong Creek, 3217



400 m<sup>2</sup>

## Maldives 24 - Melbourne - Classic

Package Price From

4 2 2 24 sq

**\$740,000\***

## About package:

- All our house designs are fully customisable or bring your own design - Home Group will build it!

Up to \$40K land rebate available!

All of this included in your new home:

- Category 1 facade
- Timber laminate flooring & loop pile carpet
- Stone benchtops to kitchen, ensuite and bathroom
- European Design flickmixer tapware
- Rain head showers
- Semi framed shower screens
- Tiled shower bases
- Lever Door Handles
- Double Lock Up Garage with remote control door
- Gas ducted heating throughout
- Site costs
- 7 Star Energy Rating
- Solar System
- Double glazing
- Council and Developer Requirements

Classic Kitchen Inclusions:

- Huge 1200mm Wide Island Bench with breakfast bar
- Stone Benchtops
- European High Gloss Cabinetry

## ENQUIRE NOW:

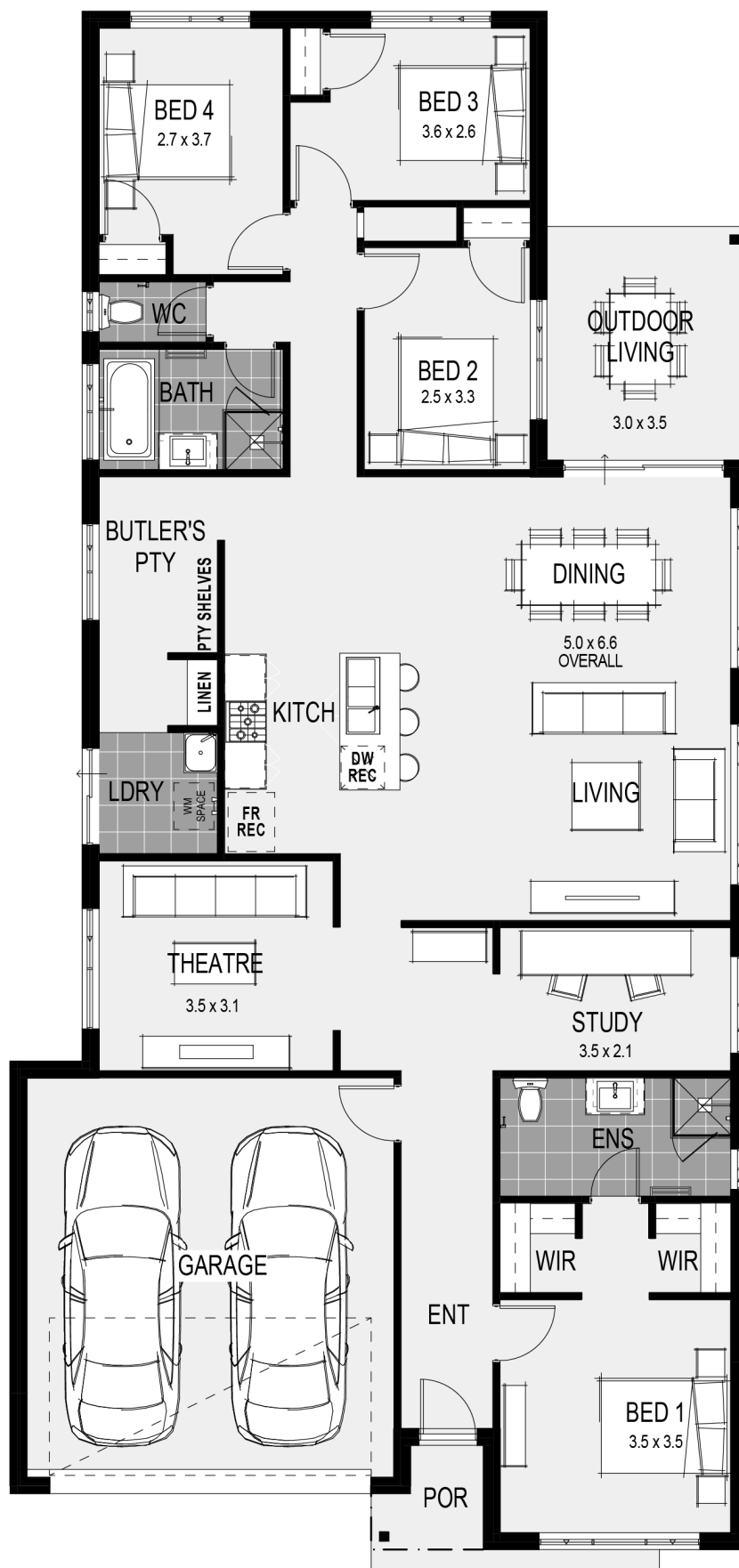
Jarrad Hodge • P: 0418 394 708 • E: [jarrad.hodge@homegroup.com.au](mailto:jarrad.hodge@homegroup.com.au)

Group

\*All Images and plans depicted are for illustrative purposes only and are subject to change. This work or any part of it may not be reproduced or copied in any form without the prior written consent of Home Group. © Home Group Pty Ltd CDB-U 59667. \*All Prices and specifications shown are subject to change without notice, and are subject to final confirmation upon the terms of any agreement with Home Group at the time of purchase. For full terms and conditions applicable please see [www.homegroup.com.au/terms](http://www.homegroup.com.au/terms)

## House Features:

- ✓ NBN connection, Council Charges & Developer Requirements
- ✓ Classic Kitchen Upgrade - 1200mm island bench with stone benchtops, Westinghouse 900mm appliances with freestanding stove, Westinghouse 900mm rangehood, high gloss cabinetry, subway tiled splashback, double pull out bin
- ✓ Coloured throughout Driveway
- ✓ Titled Block!
- ✓ For a limited time only the Electronic Smart Lock Upgrade is included for Free!



## ENQUIRE NOW:

Jarrad Hodge • P: 0418 394 708 • E: [jarrad.hodge@homegroup.com.au](mailto:jarrad.hodge@homegroup.com.au)

Group

\*All Images and plans depicted are for illustrative purposes only and are subject to change. This work or any part of it may not be reproduced or copied in any form without the prior written consent of Home Group. © Home Group Pty Ltd CDB-U 59667. \*All Prices and specifications shown are subject to change without notice, and are subject to final confirmation upon the terms of any agreement with Home Group at the time of purchase. For full terms and conditions applicable please see [www.homegroup.com.au/terms](http://www.homegroup.com.au/terms)