



Price based on standard floorplan and façade. Image depicts upgrade items not included in price.

# \$848,236

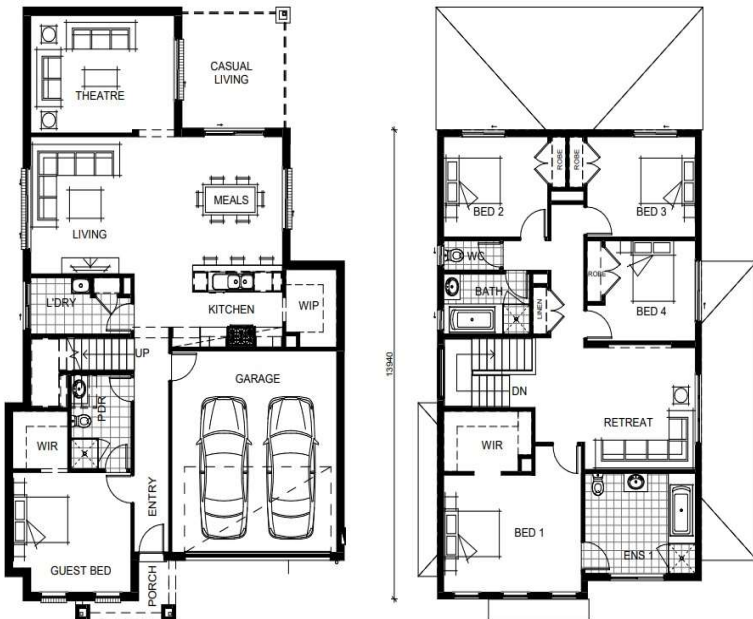


**Package Price: \$848,236**

**Lot Number: 3103**

**Lot Size: 350m<sup>2</sup>**

**House : PARIS 320 – Altitude Range**



At a glance:



**Inclusions List:**

- Site Cost Allowance included
- Floor Coverings Throughout
- 900mm Stainless Steel Appliances
- 20mm Stone to Kitchen, Bathroom & Ensuite
- Ducted Heating
- Bonus Evaporative Cooling
- 2590mm Ceiling Heights to ground floor
- 2440mm Ceiling Heights to first floor
- 7 Star Energy