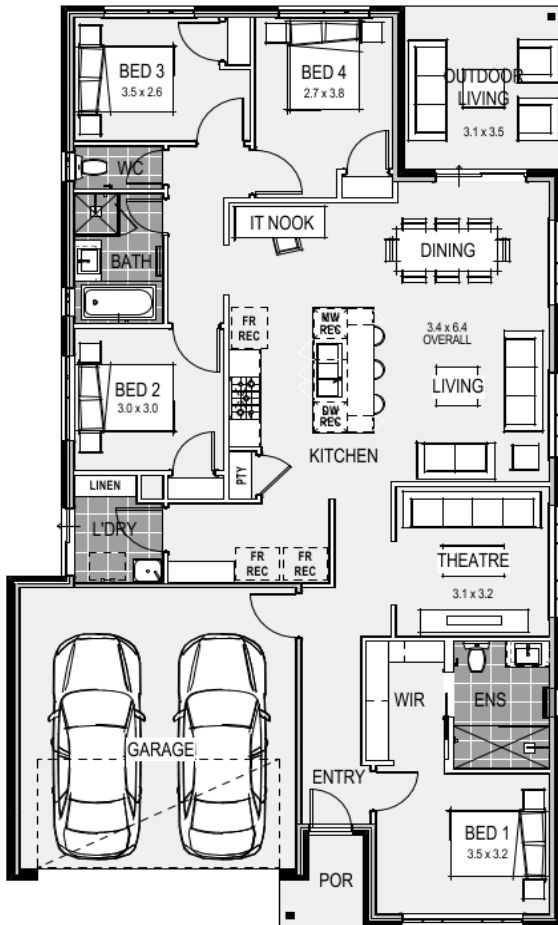




House Plan:



LOT #3105

Ashbury Estate

Address: Berkeley Drive, Armstrong Creek, 3217



350 m²

Amelia 21 - Melbourne - Classic

Package Price From

4 2 2 21 sq

\$677,000*

About package:

• Up to \$25K rebate available ! Terms and Conditions apply.

- All of this included in your new home
- Category 1 facade
- Timber laminate flooring & loop pile carpet
- Stone benchtops to kitchen, ensuite and bathroom
- European Design flickmixer tapware
- Rain head showers
- Semi framed shower screens
- Tiled shower bases
- Lever Door Handles
- Double Lock Up Garage with remote control door
- Gas ducted heating throughout
- Fixed site costs
- 7 Star Energy Rating
- Solar System
- Double glazing
- Council and Developer Requirements

Classic Kitchen Inclusions

- Huge 1200mm Wide Island Bench with breakfast bar
- Stone Benchtops
- European High Gloss Cabinetry
- Extensive Drawers

ENQUIRE NOW:

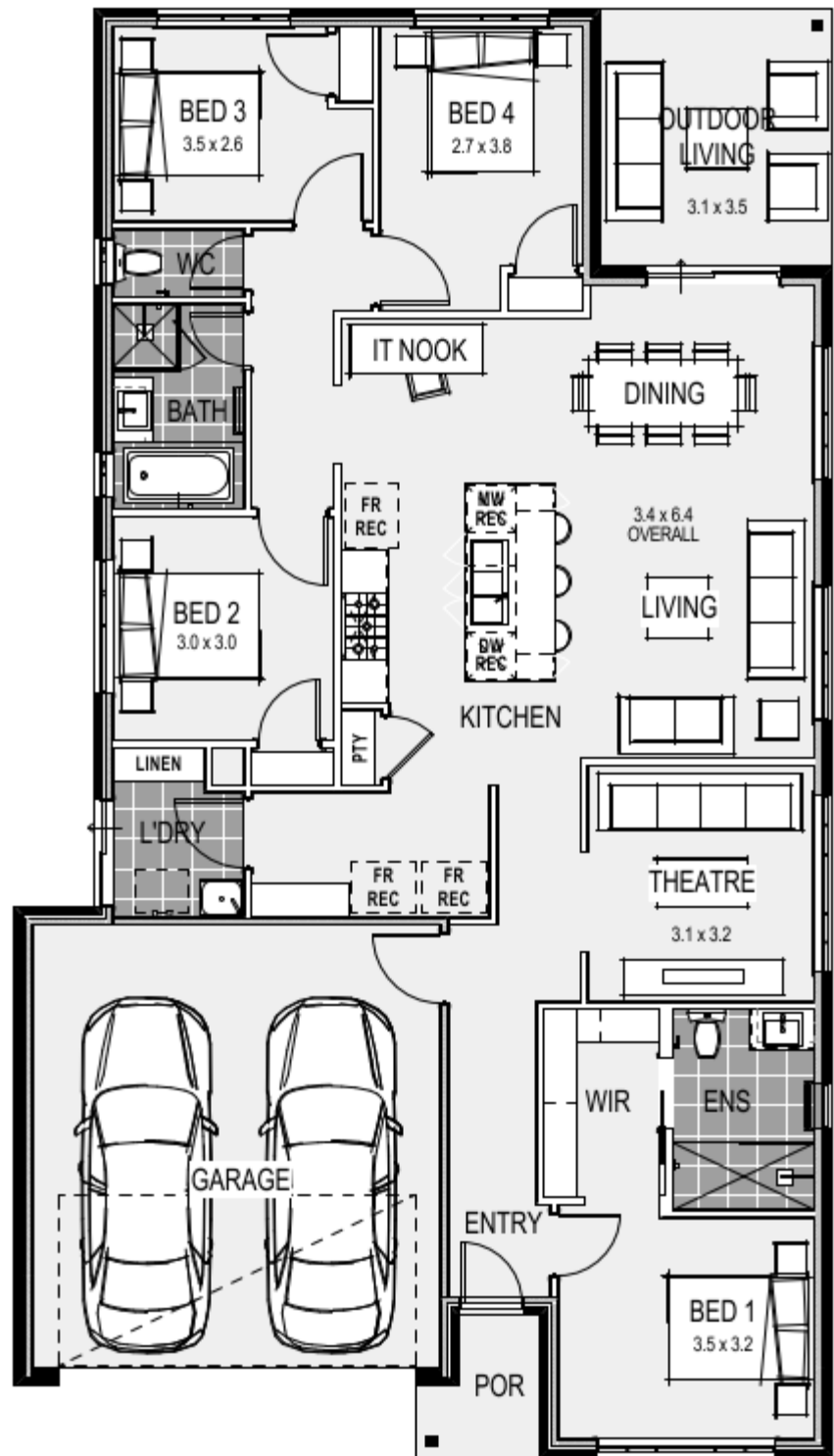
Jarrad Hodge • P: 0418 394 708 • E: jarrad.hodge@homegroup.com.au

Group

*All Images and plans depicted are for illustrative purposes only and are subject to change. This work or any part of it may not be reproduced or copied in any form without the prior written consent of Home Group. © Home Group Pty Ltd CDB-U 59667. *All Prices and specifications shown are subject to change without notice, and are subject to final confirmation upon the terms of any agreement with Home Group at the time of purchase. For full terms and conditions applicable please see www.homegroup.com.au/terms

House Features:

- ✓ NBN connection, Council Charges
- ✓ Site Costs
- ✓ 7-Star Energy Efficiency and NCC Requirements Included
- ✓ Classic Designer Kitchen Upgrade
- ✓ Driveway
- ✓ Council Charges & Developer Requirements



ENQUIRE NOW:

Jarrad Hodge • P: 0418 394 708 • E: jarrad.hodge@homegroup.com.au

Group

*All Images and plans depicted are for illustrative purposes only and are subject to change. This work or any part of it may not be reproduced or copied in any form without the prior written consent of Home Group. © Home Group Pty Ltd CDB-U 59667. *All Prices and specifications shown are subject to change without notice, and are subject to final confirmation upon the terms of any agreement with Home Group at the time of purchase. For full terms and conditions applicable please see www.homegroup.com.au/terms