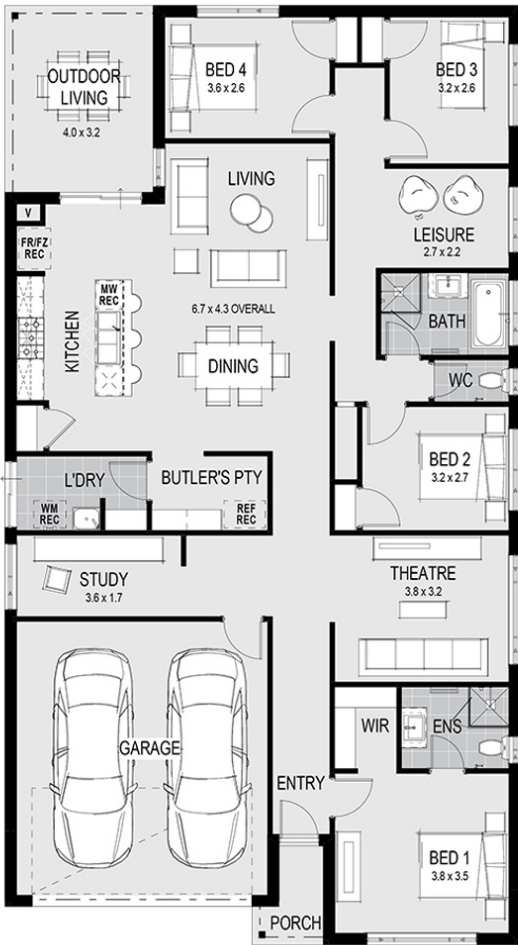




House Plan:



LOT #3110

Ashbury Estate

Address: Berkeley Drive, Armstrong Creek, 3217



459 m²

Paris 25 - Melbourne - Classic

Package Price From

4 2 2 24 sq

\$785,000*

About package:

- All our house designs are fully customisable or bring your own design - Home Group will build it!

Including our \$30,000 DESIGNER KITCHEN:

- Huge 1200mm Wide Island Bench with breakfast bar
 - Stone Benchtops
 - European High Gloss Cabinetry
 - Lift up overhead Cupboards
 - Extensive Drawers
 - 900mm Westinghouse Freestanding Stove
 - Integrated Electrolux Rangehood
 - Microwave recess with pot drawer
- All of this included in your new home
- Category 1 façade
 - Timber laminate flooring & loop pile carpet
 - Stone benchtops to kitchen, ensuite and bathroom
 - European Design flickmixer tapware
 - Rain head showers
 - Council and Developer Requirements
 - Tiled shower bases
 - Double Lock Up Garage with remote control door
 - Fixed site costs
 - 7 Star Energy Rating
 - Solar System
 - Double glazing

ENQUIRE NOW:

Jarrad Hodge • P: 0418 394 708 • E: jarrad.hodge@homegroup.com.au